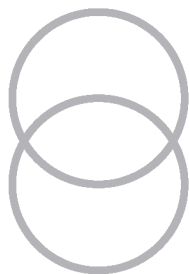


REVLON COLORIST™

EXPERT COLOR AND GLAZE SYSTEM



GUIDE TO BEAUTIFUL HAIRCOLOR
WEEK AFTER WEEK

ASK REVLON COLORIST

Q: How do I prepare for successful coloring?

A: Create a comfortable place that has everything you need on hand.

Be sure to include good lighting, a mirror, a timer or clock, and something fun to read or listen to while your color is processing.

Protect your clothing with a smock or towel to prevent staining.

It's a good idea to have towels and a shirt that you use "just for coloring."

Dab moisturizing cream or petroleum jelly on the skin around your hairline (without touching your hair) to keep haircolor from staining your skin.

For precise results use plastic clips to divide hair into 4 equal sections and use a wide-toothed plastic comb to spread the color formula evenly from root to tip.

Q: How can I keep my new color looking its best before I color again?

A: Use Revlon Colorist Conditioning Colorglaze treatment right after coloring for exceptional shine and vibrancy. Repeat Colorglaze treatment once a week as your conditioning step to keep color fresh and vivid.

Wait a day after coloring before shampooing because color needs a day to set.

Avoid deep-cleansing shampoos (they can strip color). Instead, use shampoos specially formulated for color-treated hair. They use milder ingredients that will protect and extend the life of your new color.

Q: What exactly is Revlon Colorist Conditioning Colorglaze?

A: It's a protective gloss for hair with a tint of color tone that refreshes color, adds shine and seals in moisture in just 2 minutes.

Q: What makes Revlon Colorist Conditioning Colorglaze unique?

A: Revlon's Colorglaze is custom matched to the base shade in each haircolor kit – to maintain perfect tone week after week.

It's as easy to use as a conditioner (and it is a conditioner too). Just apply after shampooing – right in the shower if you want. And keep your Colorglaze tube in the shower or tub along with your regular haircare products.

When used once a week, your hair will be beautiful and the color will be refreshed with maximum shine.

COLORING YOUR HAIR

1. MIX DEVELOPER AND COLORANT

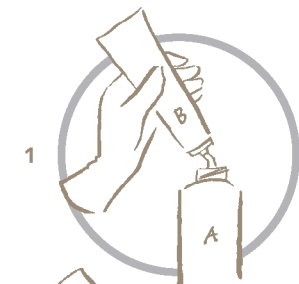
- Put on protective gloves
 - Snap the tip off the applicator cap, then remove the cap from the Developer bottle (A)
 - Unscrew cap from the Colorant tube (B). Pierce opening with the point in cap and squeeze entire contents into the Developer bottle (A)
 - Screw applicator cap securely back onto the Developer bottle (A)
 - Place gloved finger over tip, pointing away from face. Shake thoroughly for approximately 30 seconds until mixture is thoroughly blended
 - Proceed to application immediately
- Note:** Color of mixture during application and development is not final color result

2. APPLY

- Part your hair into 4 equal sections. For best results, secure each section with a plastic clip
- Unclip one section of hair, then use applicator tip to make approximately 1/8-inch partings through the rest of the section and apply color to root area at each parting, moving down through the section from top to bottom
- Do not rub color into scalp
- Repeat for the three remaining sections

If this is your first time coloring

- Comb or gently work remaining mixture through the rest of your hair, saturating hair completely through to the tip. If hair is long, pile loosely on top of head
- Leave on for 25 minutes
- For resistant gray hair, leave on for an extra 5 minutes (30 minutes total)



If you are re-coloring or re-touching your hair

- Apply color to root area only, leave on for 20 minutes
- For resistant gray hair, leave on for an extra 5 minutes (25 minutes total)
- Then comb or gently work remaining mixture through rest of hair to saturate hair completely
- Leave on for 5 more minutes

3. RINSE

- Add a little warm water to your hair and gently work into a lather. Thoroughly rinse until water runs clear
- Discard any unused mixture immediately

4. DISPENSE CONDITIONING COLORGLAZE

- Immediately after coloring, squeeze a quarter-sized amount of Revlon Colorist Conditioning Colorglaze into the palm of your hand

5. APPLY

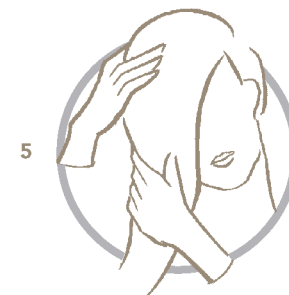
- Work Colorglaze into hair and distribute evenly from root to tip. (Hint: People with very long or thick hair may want to use a wide-toothed comb for more precise application)
- Wash hands thoroughly

6. TIME AND RINSE

- Leave Colorglaze on hair for 2 minutes to perfect your new color. Revlon Colorist Conditioning Colorglaze adds a protective gloss and a hint of color tone matched exactly to your base shade
- Rinse thoroughly with warm water and style as usual

Save the remaining Colorglaze – you have enough for up to 6 weekly treatments

Keep your Colorglaze tube right in the shower, tub or near the sink with your regular haircare products.



WEEKLY COLORGLAZE TREATMENT

Use Revlon Colorist Conditioning Colorglaze once a week after shampooing in place of your regular conditioner to seal in color and boost shine.

DISPENSE

(See Step 4 above)

- After shampooing, squeeze a quarter-sized amount of Revlon Colorist Conditioning Colorglaze into the palm of your hand

APPLY

(See Step 5 above)

- Work Colorglaze into hair and distribute evenly from root to tip
- Wash hands thoroughly

TIME AND RINSE

(See Step 6 above)

- Leave Colorglaze on hair for 2 minutes
- Rinse thoroughly with warm water and style as usual

HINT:

It's a good idea to designate a regular day of the week to refresh your haircolor with Revlon Colorist Conditioning Colorglaze (like Sunday night or Monday morning) so you're sure to look your best all week.

OPTIONS FOR NEXT TIME YOU COLOR

To keep the same shade you have now	Punch out the shade circle on the top of your Revlon Colorist box to help you remember your shade the next time you shop.
To lighten or darken your current shade	Use the next lighter or darker haircolor shade. Choose a color within the same family of tones (example: ash tones, golden tones) for a subtle change or a color from a different family of tones for more drama.
To add warm tones to your color	Use a shade in your preferred base color family <u>with</u> the word "golden," "auburn," "red," "bronze" or "burgundy" in the name.

To get great color for hair with more than 50% gray	Use a shade in your preferred base color family <u>without</u> the word "golden," "auburn," "red," "bronze," "ash" or "burgundy" in the name.
To create additional dimension in your hair with brightening tones	Use highlights to add lighter contrasts to your base color. Revlon Custom Effects™ offers you salon-quality highlights in 4 shades.
To create additional dimension in your hair with deepening tones	Use lowlights to add darker contrasts to your base color. Revlon Custom Effects™ offers you salon-quality lowlights in 3 shades.
To cover a few strands of unwanted gray hair and create additional dimension at the same time	Apply highlights or lowlights throughout your hair, making sure to cover gray strands. Choose from 7 shades of Revlon Custom Effects™ highlights and lowlights.

CAUTION:**KEEP OUT OF REACH OF CHILDREN.**

This product contains ingredients which can cause serious irritant, respiratory and/or allergic reactions. Prepare and use in a well-ventilated area. Wear appropriate gloves. Avoid contact with eyes and skin (other than areas of application). If contact occurs, immediately flush with water and get medical attention. Do not use to dye eyelashes or eyebrows. Rinse hair well after application. Do not inhale or ingest. If affected by inhalation, move to fresh air. If symptoms persist, get medical attention. If swallowed, call a physician, hospital emergency room or poison control center immediately. Induce vomiting only if recommended by medical personnel.

IMPORTANT: Hair colorants can cause allergic reactions, which in rare instances can be severe. Tattoos may increase your risk of allergy. To reduce your risk, follow these instructions.

SAFETY INSTRUCTIONS:

1. DO NOT USE THIS PRODUCT AT ALL IF:
 - you have already experienced any reaction to coloring products
 - you have sensitive, irritated or damaged scalp. In these cases, consult a doctor before using any haircolor product
2. PERFORM A SKIN ALLERGY TEST 48 HOURS BEFORE EACH PRODUCT USE even if you have used coloring products before. The absence of a reaction to this test is no guarantee that an allergic reaction may not occur as a result of future haircoloring process. However, this test represents an important precaution. Please consult a doctor, if you have any doubts.
3. IF DURING COLORING YOU EXPERIENCE
 - any stinging or burning and/or rash, rinse immediately and discontinue use as this may be an indication of a more serious reaction. DO NOT color your hair again before consulting a doctor or seeking medical advice
 - rapidly spreading skin rash, dizziness or

faintness, shortness of breath and/or swelling to eyes/face, rinse immediately and SEEK IMMEDIATE MEDICAL ATTENTION

4. IF AFTER COLORING OR ON THE FOLLOWING DAYS YOU EXPERIENCE problems such as skin or scalp itching, skin or scalp rash, swelling to eyes/face, blistering and/or skin or scalp weeping, SEEK IMMEDIATE MEDICAL ATTENTION

PRECAUTIONS:

- KEEP OUT OF REACH OF CHILDREN. This product is not intended to be used on children
- Never use if scalp is irritated or injured
- Always keep applicator tip pointed away from face
- Remove metal objects from hair before coloring. Do not use metal combs or clips; use only plastic or glass utensils
- This product contains ingredients which may cause severe eye irritation and possible permanent eye injury. Keep eyes tightly closed when rinsing mixture from hair. If mixture should accidentally get into eyes, flush immediately with lukewarm water and call a physician
- Remove glasses or contact lenses before coloring. If you must wear contact lenses during application and mixture gets into your eyes, remove the lenses first then flush immediately with lukewarm water. Call a physician
- Never use on eyelashes or eyebrows – it may cause blindness
- Do not store prepared mixture – the container may burst. Pour unused mixture down the drain before discarding empty container. Rinse sink area
- Do not use this product on facial hair such as male beard or mustache

APPLICATION ADVICE:

- Do not shampoo immediately before coloring. If hair is very soiled or has heavy buildup of styling aids, shampoo 24 hours before application
- Prepare mixture immediately before use, never sooner
- Do not mix with any other products
- Keep developer away from heat and light. Store unopened kit in a cool, dry place until ready to use. (Do not refrigerate)
- Do not use over metallic dyes, compound hennas or color restorers. It can result in discoloration or breakage
- If your hair has just been permed or relaxed, wait at least 14 days before coloring
- Do not use if your hair is not in good condition
- Protect clothing and work area from spills with a smock and old towels to avoid permanent staining
- Rinse spills immediately with cool water. If skin contact occurs, wash quickly with cool water
- Use at room temperature (50-80°F) for best color results

ALLERGY TEST**48 HOURS BEFORE COLORING:**

IMPORTANT: Allergies and sensitivities can develop suddenly, even after regular use of a product. For this reason, always take the Allergy Test 48 hours before EACH AND EVERY APPLICATION.

Prepare the test mixture as follows:

- Mix 1 teaspoon Colorant (B) (pierce opening of tube with point in cap) and 1½ teaspoons of Developer (A) in a plastic or glass container. Recap both tightly
- Wash and pat dry a test area about the size of a quarter on the inside of your elbow
- Apply some of the test mixture to the cleansed area with a cotton-tipped applicator and let dry
- Apply a small dab of the Conditioning Colorglaze on the test area next to the haircolor mixture and let dry

- Do not wash off for 48 hours. If no reaction has occurred, you are ready to color your hair. If the skin test causes any abnormal reaction such as redness, itching, burning, swelling or other signs of irritation in or surrounding the test area, it means that you are allergic or sensitive to this haircolor and should not use it at this time
- Do not use this product if your scalp shows any evidence of abrasion, eruption or other abnormal condition

COLOR PREVIEW TEST**48 HOURS BEFORE COLORING:**

Haircolor results can be affected by permanent waving, straightening, overexposure to the sun, previous coloring and other stress factors. To see how your new color will look, use the remaining mixture from your Allergy Test.

- Snip a small swatch of hair ¼ inch wide and tape it at one end
- Place the swatch in the test mixture, making sure that each hair strand is completely covered
- Leave in mixture for 25 minutes, then rinse thoroughly
- Saturate the hair swatch with a small amount of Conditioning Colorglaze
- Leave on 2 minutes
- Rinse and dry to preview your new color

QUESTIONS ABOUT REVLON COLORIST?

Get a consultation at revloncolorist.com
Or call the Revlon Colorist Hotline
Toll-free at 1-800-4-REVLON (473-8566)
Monday – Friday, 8:30 am – 5:00 pm EST

Revlon® Colorist™ ©Revlon Cons. Prod. Corp.
New York, NY 10017 203248-00